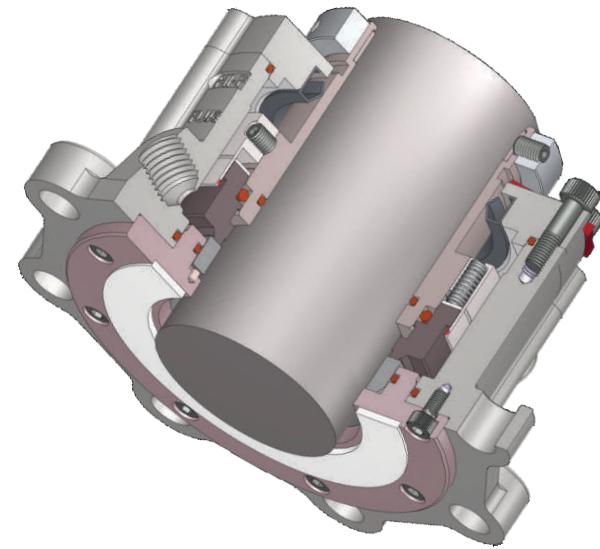


SSDB-E3 | SINGLE DUAL BALANCED AGITATOR SEAL

- DRY / WET RUNNING OPTION
- FOR VESSEL PRESSURE UPTO 6 BAR
- UN-PRESSURISED SEALANT
- CARTRIDGE CONSTRUCTION
- GMP OPTION AVAILABLE
- EXTENDED SERVICE LIFE

OPTIONS :

- SIC / SIC FACES (WET RUNNING)
- INTEGRAL BEARING



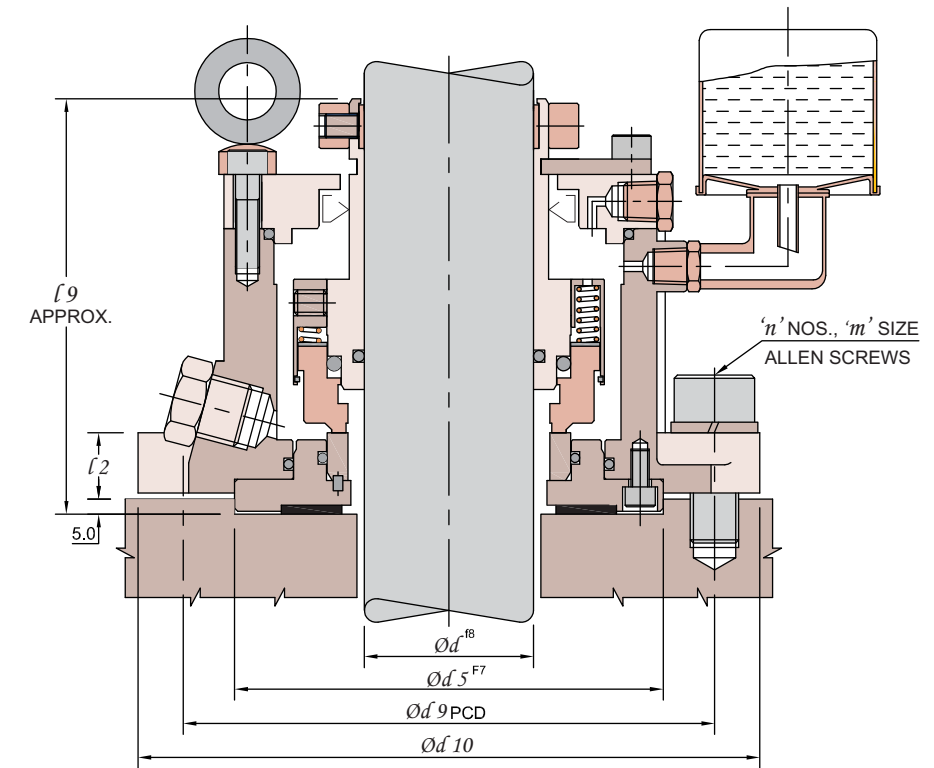
SSDB-E3 seals employ dual balanced multi spring seals with dynamic 'O' ring of bigger cross-section for higher reliability. Seal ring is of heavy duty design and stationery face is hydraulically balanced to avoid accidental pop-up.

APPLICATIONS :

- REACTORS
- HIGH VACUUM APPLICATIONS



INSTALLATION DIMENSIONS



SIZE CODE	Od	Od5	d9 PCD	Od10	f2	f9	n	m	SIZE CODE	Od	Od5	d9 PCD	Od10	f2	f9	n	m
0250	25.0								0850	85.0							
0300	30.0	115.0	145.0	170.0	33.0	135.0	4	M16	0900	90.0	210.0	270.0	300.0	22.0	150.0	8	M16
0350	35.0								0950	95.0							
0400	40.0								1000	100.0							
0450	45.0								1050	105.0							
0500	50.0	140.0	170.0	195.0	19.0	145.0	8	M16	1100	110.0	240.0	295.0	330.0	26.0	155.0	8	M20
0550	55.0								1150	115.0							
0600	60.0								1200	120.0							
0650	65.0								1250	125.0							
0700	70.0	170.0	200.0	230.0	22.0	145.0	8	M16	1300	130.0	280.0	350.0	390.0	30.0	170.0	12	M20
0750	75.0								1350	135.0							
0800	80.0								1400	140.0							

LIMITING PARAMETERS

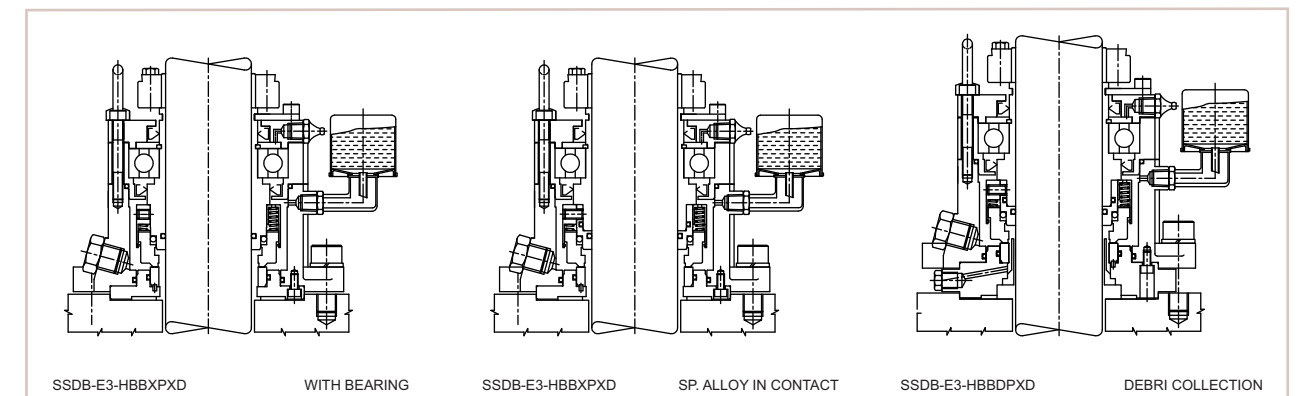
PRESSURE	TEMPERATURE	SPEED
FULL VACUUM TO 6 BAR	* DRY upto 150°C, WET upto 170°C	2 m/sec

* For higher temperatures consult HI-FAB

MATERIALS

METAL PARTS	SEAL FACES	ELASTOMERS	
	ROTARY	STATIONARY	
SS316 SPECIAL MOC ON REQUEST	CARBON	SIC, TC	VITON, FFKM, STV, PTFE
	SIC	SIC	EPR, AFLAS

DESIGN VARIATIONS



Due to continuous improvement specifications & dimensions may change without prior notice